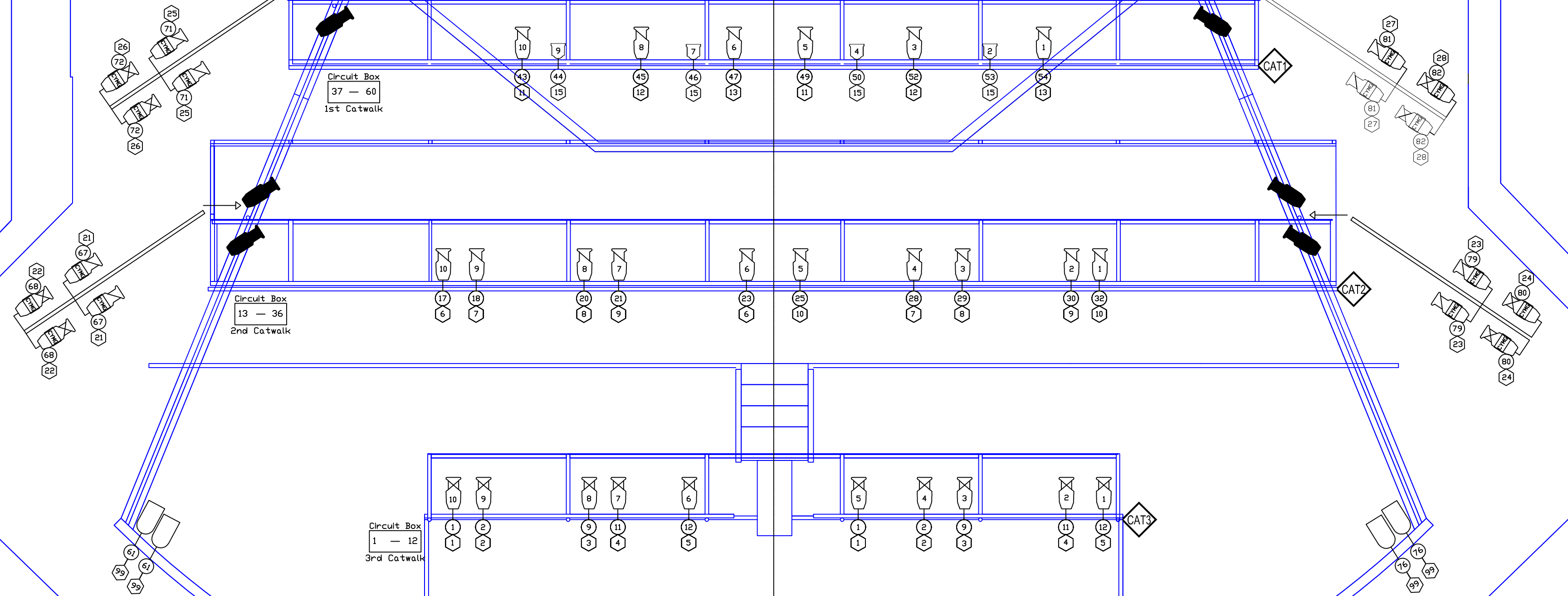
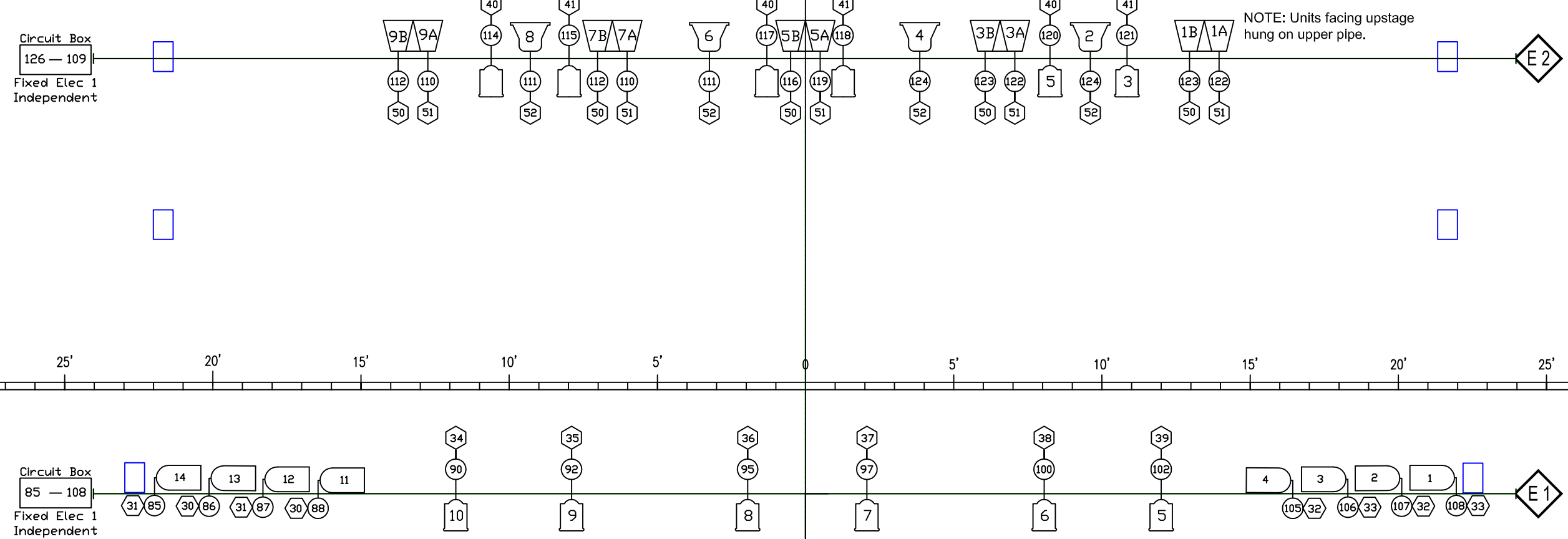



CYC WORKING
CYC STATIC
REAR CURTAIN
LINESET #4
ELECTRIC #2
LEGS #3
BORDER
LINESET #3
TRAVELLER
BORDER
LINESET #2
LEGS #1
ELECTRIC #1
LINESET #1
MAIN CURTAIN
SCREEN



KEY	


**Leshar Center for the Arts**  
 1601 Civic Drive Walnut Creek CA 94596  
 (925) 295.1400 lesheartscenter.org

---

**Leshar Theatre House Light Plot**

---

Revised 09/11  
 By: 76

---

**Scale: 1/4" = 1'**
