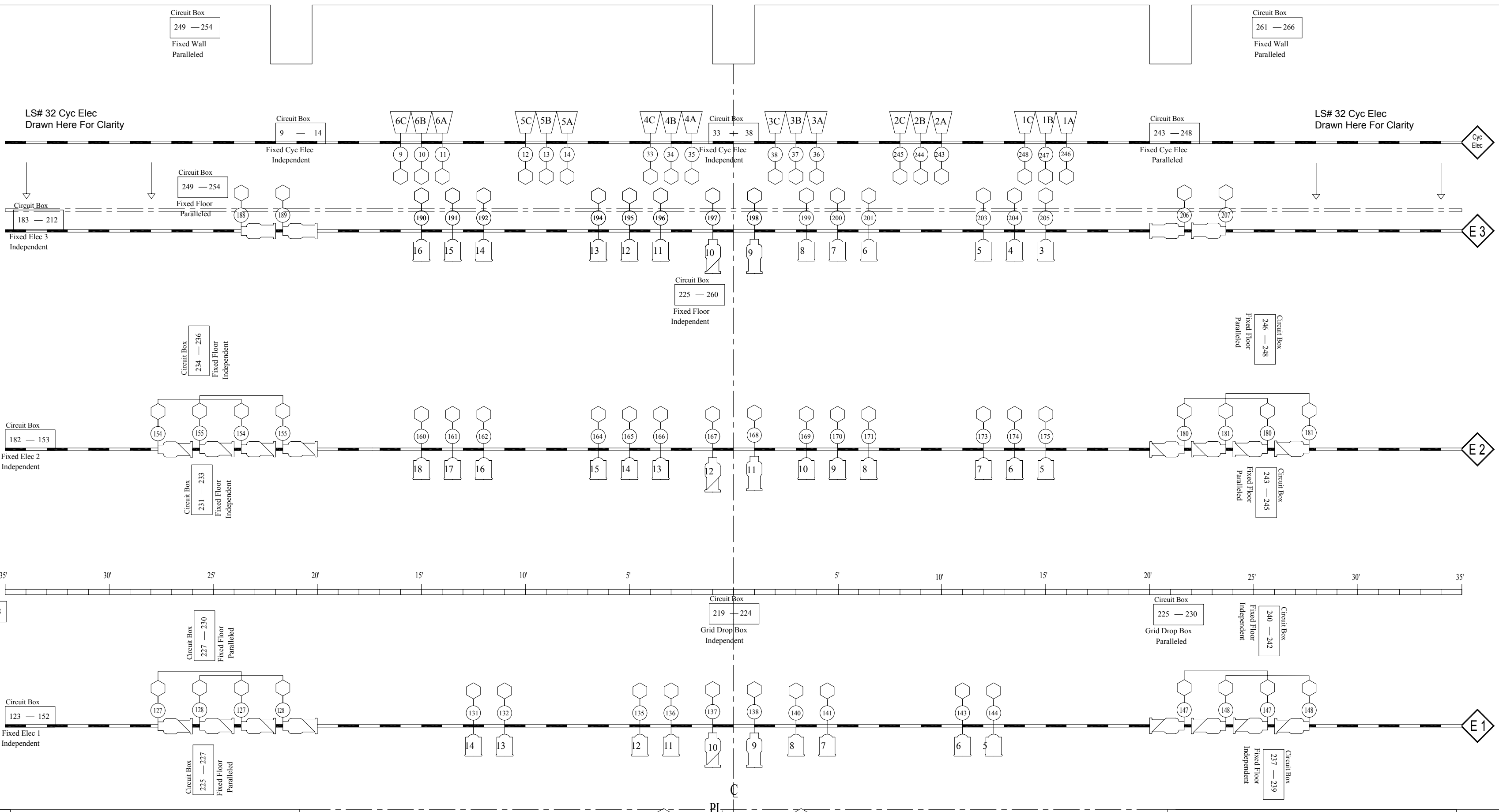
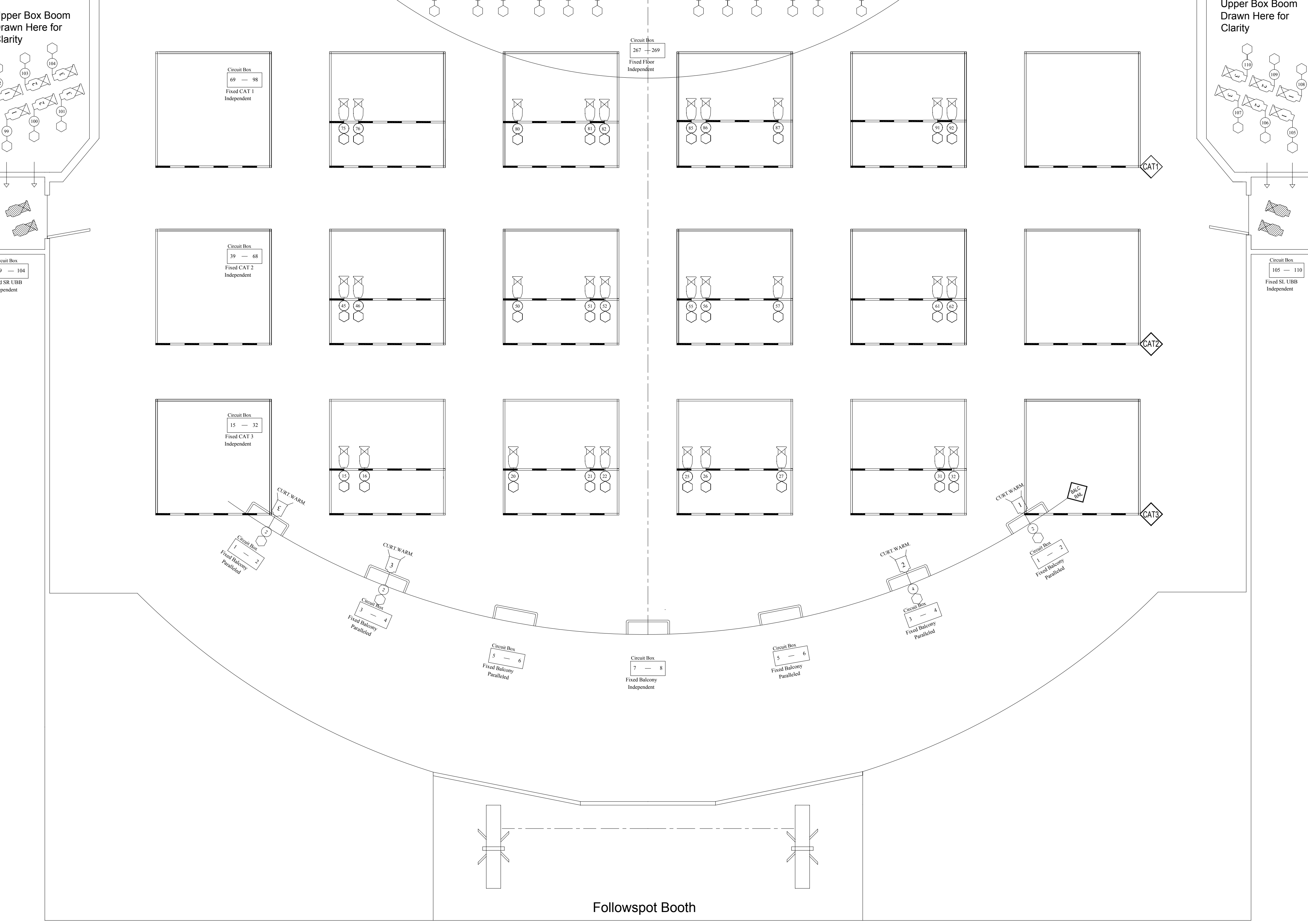
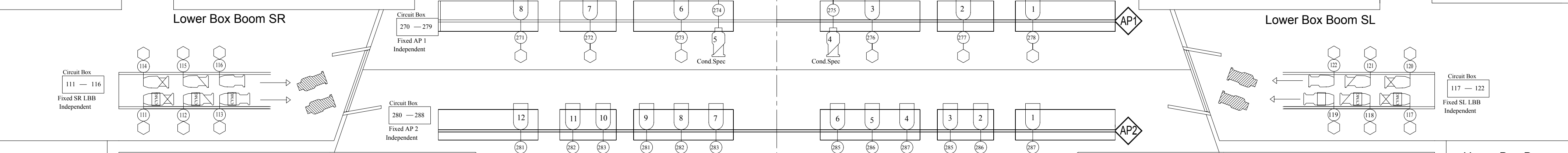


Orchestra Shell  
Storage  
Position



LS#41 STORAGE
LS#40 BLACK_SCRIM
LS#39 REAR_TRAVELLER
LS#38 CYC
LS#37
LS#36 US_TABS
LS#35
LS#34
LS#33
LS#32 CYC_ELEC
LS#31 ELEC#3
LS#30 LEGS#3
LS#29 BORDER#4
LS#28
LS#27
LS#26
LS#25
LS#24 ORCH_SHELL#3
LS#23
LS#22
LS#21 MS_TRAVELLER
LS#20
LS#19 ELEC#2
LS#18 BORDER#3
LS#17
LS#16 ORCH_SHELL#2
LS#15 LEGS#2
LS#14
LS#13
LS#12 BORDER#2
LS#11 DS_TABS
LS#10
LS#9
LS#8
LS#7 ORCH_SHELL#1
LS#6 LEGS#1
LS#5
LS#4 ELEC1
LS#3 BORDER#1
LS#2 MAIN_CURTAIN
LS#1 HEADER/SCREEN



**KEY**


**Leshar Center for the Arts**  
 1601 Civic Drive Walnut Creek CA 94596  
 (925) 295.1400 lesheartcenter.org

**Hofmann Theatre House Light Plot**

Revised 08/09  
 By: 76

**Scale: 1/4" = 1'**